

Integrated Care for High Risk Pregnancies (ICHRP) Pilot OPERATING STRUCTURE



Primary Service Population

- African American babies/families
- Paraprofessionals (doulas, CHWs, others)
- Primary Care Providers
- African American community



Primary Service Population

- African American babies/families
- Paraprofessionals (doulas, CHWs, others)
- Primary Care Providers
- African American community

Collective Impact Partners

- African American Babies Coalition (AABC)
- NorthPoint Health and Wellness Center (NorthPoint)
- Open Cities Health Center (Open Cities)
- Minnesota Department of Human Services Health Care Administration Division (DHS)



Primary Service Population

- African American babies/families
- Paraprofessionals (doulas, CHWs, others)
- Primary Care Providers
- African American community

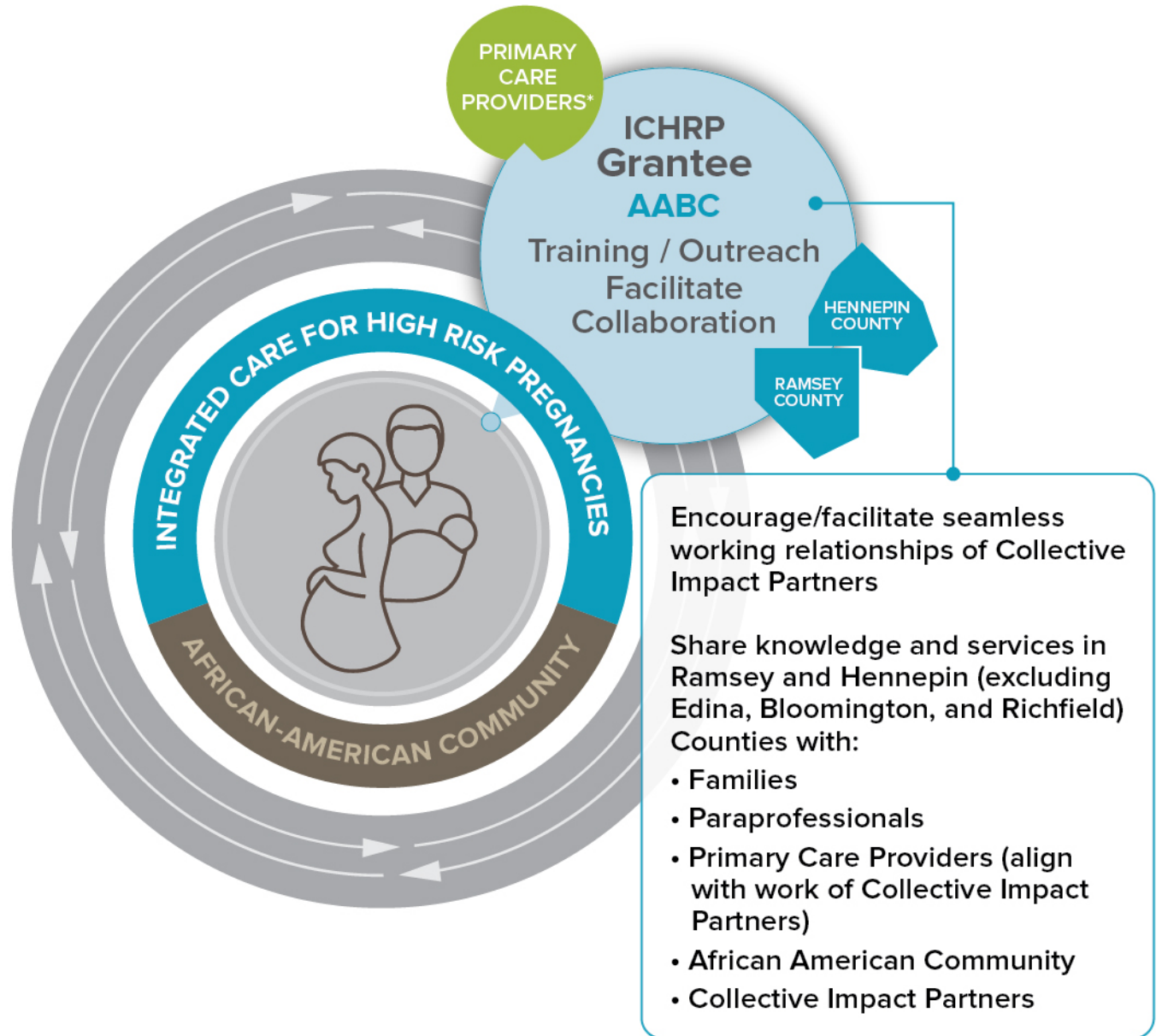
Collective Impact Partners

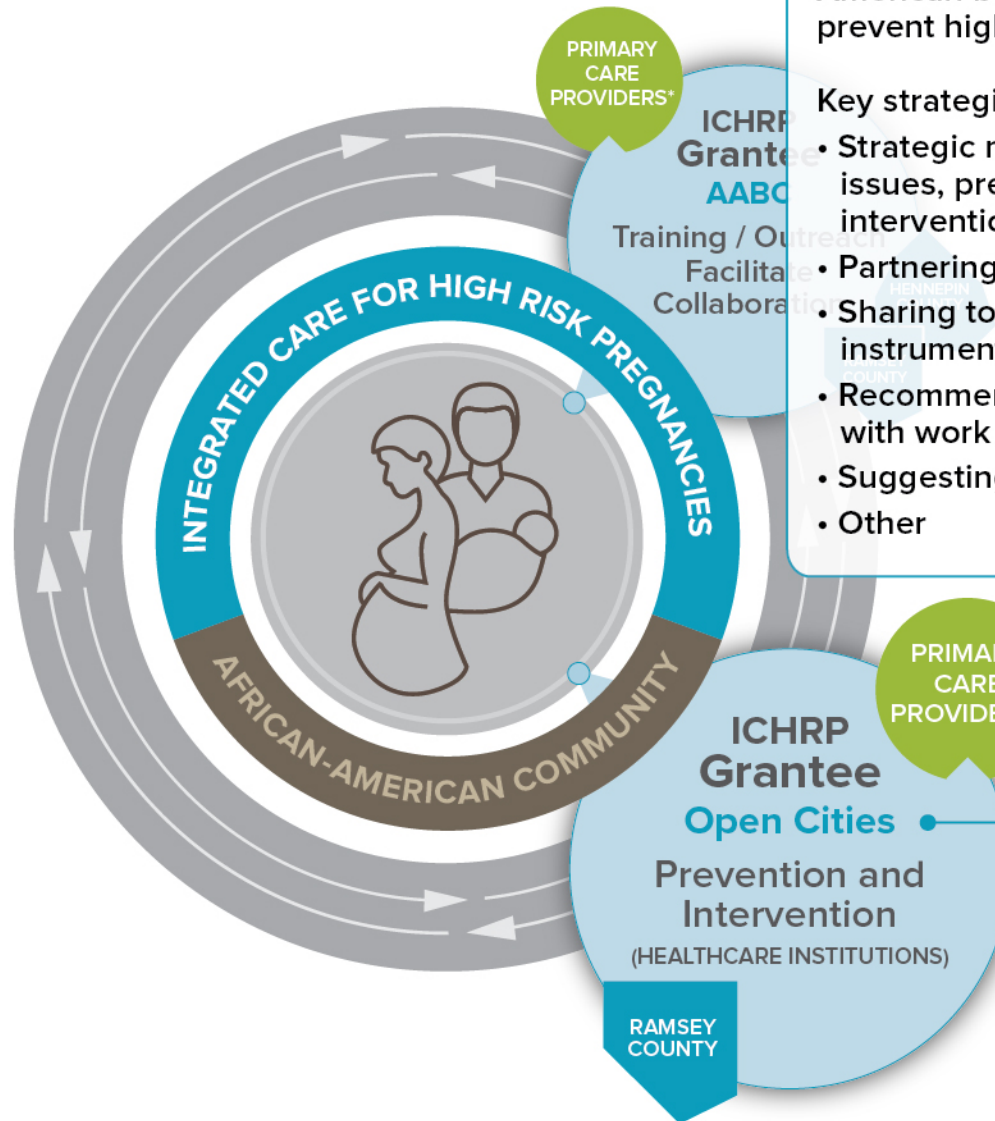
- African American Babies Coalition (AABC)
- NorthPoint Health and Wellness Center (NorthPoint)
- Open Cities Health Center (Open Cities)
- Minnesota Department of Human Services Health Care Administration Division (DHS)



Collective Impact Approach

- Common Agenda
- Shared Measurement
- Mutually Reinforcing Activities
- Continuous Communication





Encourage selected Primary Care Provides in Ramsey County to improve services to African American babies/families to prevent high risk pregnancies.

Key strategies may include:

- Strategic meetings to describe issues, prevention and intervention
- Partnering on cases
- Sharing tools (e.g., screening instrument)
- Recommending training (align with work of AABC)
- Suggesting referral locations
- Other

PRIMARY CARE PROVIDERS*

ICHRP Grantee
AABC
Training / Outreach
Facilitate
Collaboration

PRIMARY CARE PROVIDERS*

ICHRP Grantee
Open Cities
Prevention and Intervention
(HEALTHCARE INSTITUTIONS)
RAMSEY COUNTY

Encourage selected Primary Care Providers in Hennepin County (excluding Edina, Bloomington, and Richfield) to improve services to African American babies/families to prevent high risk pregnancies.

Key strategies may include:

- Strategic meetings to describe issues, prevention and intervention
- Partnering on cases
- Sharing tools (e.g., screening instruments)
- Recommending training (align with work of AABC)
- Suggesting referral locations
- Other

